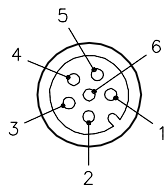
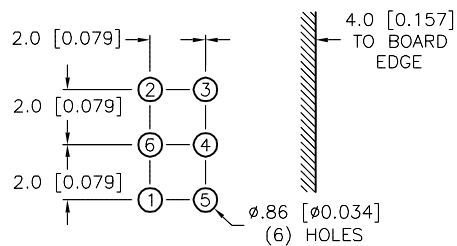


## FEMALE END VIEW

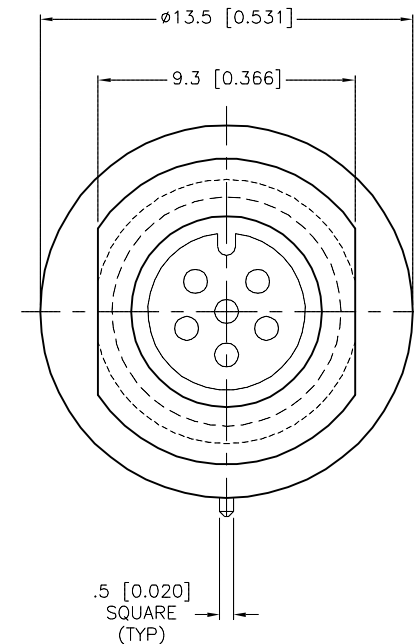
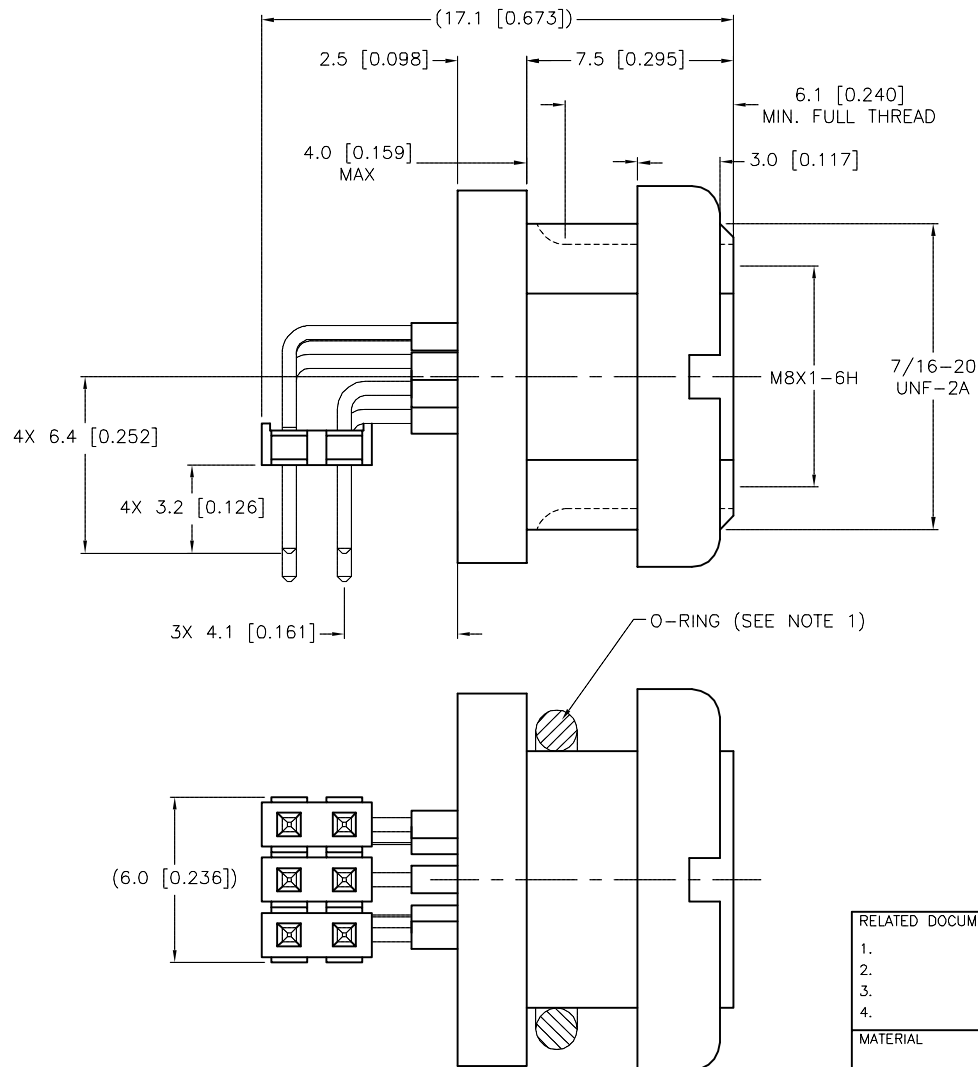


## PIN-OUT DIAGRAM



## SPECIFICATIONS

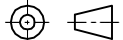
CONTACT CARRIER MATERIAL	TPU
CONTACT MATERIAL/PLATING	BRASS/GOLD
HOUSING MATERIAL/PLATING	BRASS/NICKEL
O-RING MATERIAL	BUNA-N
NUMBER OF CONTACTS	6 x 0.025 IN SQ. POSTS
RATED CURRENT [A]	1.0 A
RATED VOLTAGE [V]	24 VDC
TEMPERATURE RANGE	-30°C to +80°C (-22°F to +176°F)
PROTECTION CLASS	MEETS NEMA 1,3,4,6P AND IEC IP67



## NOTES:

1. "/CS12048" DESIGNATES LARGE O-RING INCLUDED. (Ø7.9mm I.D. x 1.45mm THK)

## SOURCE DRAWING - FOR REFERENCE ONLY

RELATED DOCUMENTS		3RD ANGLE PROJECTION		<div>THIS DRAWING IS CONFIDENTIAL AND THE PROPERTY OF TURCK INC. USE OF THIS DOCUMENT WITHOUT WRITTEN PERMISSION IS PROHIBITED.</div> <div><b>TURCK INC</b> <i>High Technology Sensors and Automation Controls</i></div> <div>3000 CAMPUS DRIVE MINNEAPOLIS, MN 55441 1-800-544-7769 (763) 553-7300 (763) 553-0708 fax turck.com</div>				
1. 2. 3. 4.								
MATERIAL		DRFT RDS		DATE 10/02/08		DESCRIPTION WMFK 6F-PCB/CS12048		
		APVD		SCALE 4=1				
FINISH		ALL DIMENSIONS DISPLAYED ON THIS DRAWING ARE FOR REFERENCE ONLY		UNIT OF MEASUREMENT <b>MILLIMETER [ INCH ]</b>		IDENTIFICATION NO.		REV
						U2-14757		B
						FILE: U2-14757		SHEET 1 OF 1
		CONTACT TURCK FOR MORE INFORMATION		DO NOT SCALE THIS DRAWING				

B	UPDATE TO TPU CONTACT CARRIER	RDS	06/01/15	49046
REV	DESCRIPTION	BY	DATE	ECO NO.